



LINEA

B E R N H A R D T



LINEA

B E R N H A R D T

Clean lines. Casual finishes. Primal forms. Linea pushes the boundaries of what a rustic modern furniture collection can be, ultimately delivering a sophisticated sense of style for today's homes. Linea's secret is a commitment to contrast and drama between its unique finishes and materials, allowing the group to break all the rules and still feel fully refined. Wire brushed oak veneers with Cerused Greige and Cerused Charcoal finishes partner elegantly with cast aluminum in a Textured Graphite finish found on metal accents and hardware, as well as Black Forest marble seamlessly integrated into pieces. Somehow, the surprises keep coming: bow fronts, geometric shapes, and asymmetrical forms are present, as are metal bands, channeled fabrics, and faceted wood designs. The finishing touch is the unique hardware that gives the collection's case pieces a jewelry-like feel. With its flawless artistry and understated elegance, Linea sets a new standard for rustic modern collections.









UNDERSTATED ELEGANCE

With its refined sense of style, Linea sets a high bar for rustic modern furniture collections. While its perfect blend of finishes, forms, and design details is impressive, the collection's unique material mix is sure to turn heads too.



SHOWN:
384-132B Buffet
334-542B Arm Chair
384-130B Sideboard

SOPHISTICATED STYLE

The use of faceted wood designs, geometric shapes, and asymmetrical forms helps give the Linea collection its singular look, while the cerused and wire-brushed oak veneers offer subtle textures and come in neutral tones designed to fit any living space.



SHOWN:
384-134G Buffet
384-547G Upholstered Side Chairs

384-242G/384-244G Rectangular Dining Table
384-548G Upholstered Arm Chairs
384-912B Sofa Table









MODERN APPEAL

Inspired by the décor of contemporary boutique hotels, Linea is all about the details. Soft fabric and marble accents are certainly alluring, and perfectly complement artistic flourishes like geometric cubes and heavily textured metals.



SHOWN:
384-122 Metal Round Chairside Table
N1422 Hector Chairs (*Body Fabric 1101-011*)

384-111B End Table
N2877 Palisades Sofa (*Body Fabric 2033-011 with
contrasting cord 059-012*)

SUBTLE TEXTURES

The Cersued Greige and Cersued Charcoal finishes found on the Linea collection pair seamlessly with the Textured Graphite cast aluminum found on metal accents and hardware. Wood and metal combinations also make a memorable appearance on many pieces.



SHOWN:

384-125B Round Chairside Table

384-121B End Table

384-910G Console Table

N2877 Palisades Sofa (*Body Fabric 2033-011 with contrasting cord 059-012*)







DRAMATIC FLAIR

For the Linea collection, the drama lies in contrast. While this is obvious in the finishes and materials, once you look closer you see it elsewhere, in the uncommon accents and hardware, as well as the ingenious juxtaposition of different shapes and forms.



SHOWN:

384-875G Entertainment Console
384-011B Square Cocktail Table
384-123 Metal Round Chairside Table
384-870G Entertainment Console

N5214SL Milano Chair (*Leather 209-010*)







CASUAL FINISHES

For all of Linea's sophistication, the collection still offers a relaxed feel purposely designed for today's casual living. The neutral shades and tones found on pieces are at home in any room, and work in harmony with Linea's rustic modern aesthetic.



SHOWN:

384-054B Dresser
384-321B Mirror
384-507B Round Bench
384-052G Dresser
384-333B Round Mirror

RUSTIC MODERN

With its sleek lines, laid-back finishes, and creative forms, Linea is a triumph of reimagined furniture design. By pushing the envelope of what rustic modern can be, Linea never settles, which is what makes it a truly eye-catching collection.



SHOWN:

384-H63B/FR3B Upholstered Panel Bed

384-230B Bachelor's Chests

384-507B Round Benches

384-054B Dresser

384-321B Mirror







LINEA INDEX

384-242B RECTANGULAR DINING TABLE TOP
384-244B PEDESTAL DINING TABLE BASE (PAIR)
384-242G RECTANGULAR DINING TABLE TOP
384-244G PEDESTAL DINING TABLE BASE (PAIR)

Overall: W 90-1/4 (110-1/4) | D 44-1/4 | H 30 in.
Overall: W 229.24 (280.04) | D 112.40 | H 76.20 cm.

One 20" table leaf. Cast aluminum bead trim around apron bottom in Textured Graphite finish. Adjustable glides. Cerused Charcoal and Cerused Greige finishes.
pages 6, 7, 23



384-272B ROUND DINING TABLE TOP
384-273B DINING TABLE BASE

Overall Diameter: 60 | H 30 in.
Overall Diameter: 152.40 | H 76.20 cm.

Four cast aluminum posts in Textured Graphite finish with a cross shaped wood base in Cerused Charcoal finish. Adjustable glides.
pages 2, 3



384-547B UPHOLSTERED SIDE CHAIR
384-547G UPHOLSTERED SIDE CHAIR

W 22 | D 26-7/16 | H 37-5/8 in.
W 55.88 | D 67.15 | H 95.57 cm.

Seat Height: 19 in. | 48.26 cm.
Seat Depth: 19 in. | 48.26 cm.
Fabric shown: B435 and B442
Solid Ash. Upholstered seat, inback, outback and wing with no welt or nailhead trim. Cerused Charcoal and Cerused Greige finishes.
Also available in other fabrics excluding leathers, silks and pillow fabrics; order as 384-X47B and 384-X47G.
pages Inside Front Cover, 6, 7, 22, 23



384-548B UPHOLSTERED ARM CHAIR 384-548G UPHOLSTERED ARM CHAIR

W 25 | D 26-3/8 | H 37-5/8 in.
W 63.50 | D 66.99 | H 95.57 cm.

Arm Height: 25-1/2 in. | 64.77 cm.

Seat Height: 19 in. | 48.26 cm.

Seat Depth: 19 in. | 48.26 cm.

Fabric shown: B435 and B442

Solid Ash. Upholstered seat, inback, outback and wing with no welt or nailhead trim. Cerused Charcoal and Cerused Greige finishes.

Also available in other fabrics excluding leathers, silks and pillow fabrics; order as 384-X48B and 384-X48G.

page 7



384-541B SIDE CHAIR

W 21 | D 24-3/8 | H 36-1/2 in.
W 53.34 | D 61.91 | H 92.71 cm.

Seat Height: 19 in. | 48.26 cm.

Seat Depth: 20-1/8 in. | 51.12 cm.

Fabric shown: B435

Solid Ash. Upholstered seat and half back (inside and outside) with no welt or nailhead trim. Cerused Charcoal finish.

Also available in other fabrics excluding leathers, silks and pillow fabrics; order as 384-X41B.



384-542B ARM CHAIR

W 22-3/4 | D 24-3/8 | H 36-1/2 in.
W 57.79 | D 61.91 | H 92.71 cm.

Arm Height: 25 in. | 63.50 cm.

Seat Height: 19 in. | 48.26 cm.

Seat Depth: 20-1/8 in. | 51.12 cm.

Fabric shown: B435

Solid Ash. Upholstered seat and half back (inside and outside) with no welt or nailhead trim. Cerused Charcoal finish.

Also available in other fabrics excluding leathers, silks and pillow fabrics; order as 384-X42B.

pages 2, 3, 4, 23



384-130B SIDEBOARD

W 68 | D 19 | H 34 in.
W 172.72 | D 48.26 | H 86.36 cm.

Six drawers. Both long, narrow drawers located far left have wrapped pads (no silverware insert). Two center support legs. Adjustable glides. Anti-tip kit. Cersed Charcoal finish.
pages, 2, 5



384-134G BUFFET

W 74-1/8 | D 19 | H 34 in.
W 188.28 | D 48.26 | H 86.36 cm.

Four push-to-open doors with dimensional fancy face veneered door fronts. Behind each pair of doors is one open compartment with ventilation and grommet holes in back panel, one drawer with hand pull and one fixed bottom shelf. Left drawer has wrapped pad. Right drawer has silverware insert. Plinth base. Adjustable glides. Anti-tip kit. Cersed Greige finish.
page 6



384-132B BUFFET

W 72 | D 20 | H 34 in.
W 182.88 | D 50.80 | H 86.36 cm.

LSF/RSF: One push-to-open door. Behind door is one adjustable/removable shelf and one fixed bottom shelf surface. CENTER: Two doors. Behind doors is one drawer with silverware insert and hand cut-out, and one fixed bottom shelf surface. Adjustable glides. Anti-tip kit. Cersed Charcoal finish.
pages 4, 5, 23



384-H63B/FR3B**384-H63G/FR3G****UPHOLSTERED PANEL BED (KING)**

Overall: W 82-3/4 | D 90 | H 68 in.

Overall: W 210.19 | D 228.60 | H 172.72 cm.

Fabric shown: B435 and B427

Slat Height: 7-3/4 in. | 19.69 cm.

Wood-framed headboard and footboard with three inset upholstered panels. Wood side rails. Three slat support system with center adjustable supports. Cerved Charcoal and Cerved Greige finishes.

Headboard cannot be used alone.

Also available in other fabrics excluding leathers, silks and pillow fabrics; order as 384-XH3B/XF3B and 384-XH3G/XF3G. pages 20, 21

Also available:

384-H61B/FR1B & 384-H61G/FR1G**UPHOLSTERED PANEL BED (QUEEN)**

Overall: W 66-3/4 | D 90 | H 66 in.

Overall: W 169.55 | D 228.60 | H 167.64 cm.

Also available in other fabrics excluding leathers, silks and pillow fabrics; order as 384-XH1B/XF1B and 384-XH1G/XF1G.

384-H62B/FR2B & 384-H62G/FR2G**UPHOLSTERED PANEL BED (CALIFORNIA KING)**

Overall: W 78-3/4 | D 94 | H 68 in.

Overall: W 200.03 | D 238.76 | H 172.72 cm.

Also available in other fabrics excluding leathers, silks and pillow fabrics; order as 384-XH2B/XF2B and 384-XH2G/XF2G.

384-H66G/FR6G**UPHOLSTERED CHANNEL BED (KING)**

Overall: W 82 | D 89 | H 70 in.

Overall: W 208.28 | D 226.06 | H 177.80 cm.

Fabric shown: B427

Slat Height: 8 in. | 20.32 cm.

Wood-framed headboard with upholstered inset panel containing five horizontal channels. Wood footboard and side rails. Three slat support system with center adjustable supports. Cerved Greige finish.

Headboard cannot be used alone.

Also available in other fabrics excluding leathers, silks and pillow fabrics; order as 384-XH6G/FR6G. pages Front Cover, 16, 17, 22, Back Cover

Also available:

384-H64G/FR4G**UPHOLSTERED PANEL BED (QUEEN)**

Overall: W 66 | D 89 | H 70 in.

Overall: W 167.64 | D 226.06 | H 177.80 cm.

Also available in other fabrics excluding leathers, silks and pillow fabrics; order as 384-XH4G/FR4G.

384-H65G/FR5G**UPHOLSTERED PANEL BED (CALIFORNIA KING)**

Overall: W 78 | D 93 | H 70 in.

Overall: W 198.12 | D 236.22 | H 177.80 cm.

Also available in other fabrics excluding leathers, silks and pillow fabrics; order as 384-XH5G/FR5G.



384-042G DRESSER

W 54 | D 19 | H 44 in.
W 137.16 | D 48.26 | H 111.76 cm.

Eight push-to-open drawers with dimensional fancy face veneered drawer fronts. Adjustable glides. Anti-tip kit. Cerused Greige finish.
page 22



384-052G DRESSER

W 71-1/2 | D 19 | H 36 in.
W 181.61 | D 48.26 | H 91.44 cm.

Nine drawers. Cast aluminum front post and base in Textured Graphite finish. Adjustable glides. Anti-tip kit. Cerused Greige finish.
Note: Dresser is bored for optional 384-321G mirror support attachment.
pages 16, 19, Back Cover



384-054B DRESSER
384-054G DRESSER

W 68 | D 19 | H 40-1/4 in.
W 172.72 | D 48.26 | H 102.24 cm.

Bowed front with eight drawers. Two center support legs. Adjustable glides. Anti-tip kit. Cerused Charcoal and Cerused Greige finishes.
Note: Dresser is bored for optional 384-321B and 384-321G mirror support attachment.
pages 18, 20



384-216 NIGHTSTAND

W 34 | D 18 | H 29-3/4 in.

W 86.36 | D 45.72 | H 75.57 cm.

Drawer box with laminated Black Forest marble. One push-to- open drawer. Cast aluminum base and stretchers in Textured Graphite finish. Adjustable glides. Anti-tip kit.

pages Front Cover, 17, Back Cover



384-230B BACHELOR'S CHEST

384-230G BACHELOR'S CHEST

W 38 | D 19 | H 32 in.

W 96.52 | D 48.26 | H 81.28 cm.

Bowed front with three drawers. Adjustable glides. Anti-tip kit. Cerused Charcoal and Cerused Greige finishes.

pages 20, 21



384-232G NIGHTSTAND

W 35-1/2 | D 18 | H 32 in.

W 90.17 | D 45.72 | H 81.28 cm.

Three drawers. Cast aluminum base and posts in Textured Graphite finish. Adjustable glides. Anti-tip kit. Cerused Greige finish.

pages 16, 22



384-011B SQUARE COCKTAIL TABLE

W 45 | D 45 | H 18-5/8 in.
W 114.30 | D 114.30 | H 47.31 cm.

Dimensional fancy face veneers on all sides. Casters. Cerused Charcoal finish.
pages 15, 22



384-022B RECTANGULAR COCKTAIL TABLE

W 60 | D 24 | H 18 in.
W 152.40 | D 60.96 | H 45.72 cm.

End wood panel with a round centered pedestal base on opposite end of table. Adjustable glides. Cerused Charcoal finish.
pages 8, 9, 22



384-111B END TABLE

W 20 | D 20 | H 24 in.
W 50.80 | D 50.80 | H 60.96 cm.

Triangular planes (chamfered corners) on upper portion of table. Squared tapered base. Cerused Charcoal finish.
pages 9, 11



384-121B END TABLE

W 18 | D 26-1/2 | H 24 in.

W 45.72 | D 67.31 | H 60.96 cm.

Open front-to-back case with dimensional fancy face veneers on both sides.
Adjustable glides. Cersed Charcoal finish.

pages 12, 13, 22, 23



384-124B END TABLE

384-124G END TABLE

W 22 | D 26 | H 24 in.

W 55.88 | D 66.04 | H 60.96 cm.

One drawer. Cast aluminum base with stretchers in Textured Graphite finish.
Black adjustable glides. Cersed Charcoal and Cersed Greige finishes.



384-122 METAL ROUND CHAIRSIDE TABLE

Diameter: 16 | H 24 in.

Diameter: 40.64 | H 60.96 cm.

Aluminum wrapped table in Textured Graphite finish. Adjustable glides.

pages 10, 11



384-123 METAL ROUND CHAIRSIDE TABLE

Diameter: 16 | H 24 in.
Diameter: 40.64 | H 60.96 cm.

Cast aluminum in Textured Graphite finish. Pedestal consisting of interlocking shapes. Adjustable glides.
pages 15, 22



384-125B ROUND CHAIRSIDE TABLE

Diameter: 24 | H 24 in.
Diameter: 60.96 | H 60.96 cm.

Fancy face top. Four posts. Adjustable glides. Cerused Charcoal finish.
pages 9, 12



384-910B CONSOLE TABLE
384-910G CONSOLE TABLE

W 72 | D 19-1/16 | H 33-1/8 in.
W 182.88 | D 48.42 | H 84.14 cm.

Open front-to-back case with one bottom fixed shelf surface. Cast aluminum wrapped across top and down front and back in Textured Graphite finish. Plinth base. Adjustable glides. Anti-tip kit. Cerused Charcoal and Cerused Greige finishes.
pages 9, 12, 13



384-912B SOFA TABLE

W 36 | D 12 | H 30 in.

W 91.44 | D 30.48 | H 76.20 cm.

Fancy face top with gallery rails in Cerused Charcoal finish. Cast aluminum base in Textured Graphite finish. Adjustable glides.

pages 7, Inside Back Cover



384-507B ROUND BENCH

384-507G ROUND BENCH

Diameter: 18 | H 19-1/4 in.

Diameter: 45.72 | H 48.90 cm.

Fabric shown: B435 and B427

Upholstered seat with conical shaped base with cast wood grain pattern.

Adjustable glides. Cerused Charcoal and Cerused Greige finishes.

Also available in other fabrics excluding leathers, silks and pillow fabrics; order as 384-X07B and 384-X07G.

pages 18, 20, 21



384-508 METAL BENCH

W 52 | D 18 | H 18-3/4 in.

W 132.08 | D 45.72 | H 47.63 cm.

Fabric shown: B427

Upholstered seat with no welt or nailhead. Cast aluminum frame in Textured Graphite finish. Adjustable glides.

Also available in other fabrics excluding leathers, silks and pillow fabrics; order as 384-X08B.

pages 16, 23, Back Cover



384-321B MIRROR
384-321G MIRROR

W 37-1/2 | D 1-3/4 | H 50 in.
W 95.25 | D 4.45 | H 127.00 cm.

Fancy face frame with inset non-beveled mirrored glass. Can be hung vertically or horizontally. Cerused Charcoal and Cerused Greige finishes.
Note: Due to weight, must be hung on stud.
Note: Mirror supports included for attachment to 384-052G, 384-054B and 384-054G dressers. Use support only when mirror is hung in horizontal position.
pages 18, 20, 21, 22



384-333B ROUND MIRROR

W 44 | D 2-1/4 | H 44 in.
W 111.76 | D 5.72 | H 111.76 cm.

Fancy face frame with inset non-beveled mirrored glass. Cerused Charcoal finish.
pages 16, 19



384-510S DESK STONE TOP/SIDE PANEL
384-510 DESK PEDESTAL BASE

Overall: W 72 | D 28 | H 29-1/2 in.
Overall: W 182.88 | D 71.12 | H 74.93 cm.

Laminated Black Forest marble top and end panel. Round cast aluminum pedestal in Textured Graphite finish. Adjustable glides.
page Inside Front Cover



384-870B ENTERTAINMENT CONSOLE
384-870G ENTERTAINMENT CONSOLE

W 92-1/4 | D 19 | H 30 in.
 W 234.32 | D 48.26 | H 76.20 cm.

TV Area W 90 | D 18 in.
 W 228.60 | D 45.72 cm.

Five push-to-open doors with dimensional fancy face door fronts. Behind each paired end doors and center door are two adjustable/removable, vented shelves with ventilation holes and grommet holes with covers in back panel for wire management. Plinth base. Adjustable glides. Anti-tip kit. Cerused Charcoal and Cerused Greige finishes.

page 15



384-875G ENTERTAINMENT CONSOLE

W 76-9/16 | D 19-1/2 | H 34-7/8 in.
 W 194.47 | D 49.53 | H 88.58 cm.

Four pull-to-open, soft/self-closing doors with laminated Black Forest marble door fronts. Behind end doors are two adjustable/removable shelves and one fixed bottom shelf surface. Behind center paired doors is one fixed shelf, one drawer with wrapped pad and hand cut-out and one fixed bottom shelf surface. Cast aluminum frame in Textured Graphite finish, which wraps over top and down front of case - forming base. Black adjustable glides. Anti-tip kit. Cerused Greige finish.

page 14

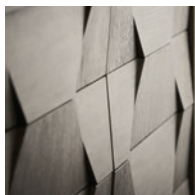


SIGNATURE ELEMENTS



INSPIRATION

Imagine the decor of a modern boutique hotel, and that will provide a glimpse into Linea's rustic modern aesthetic. There is contrast and drama between the unique finishes and materials, which makes it a truly eye-catching collection.



ARTISTRY

With its bow fronts, geometric shapes, and asymmetrical forms, Linea presents a mix of transitional forms. Additional elements include a unique wood-and-metal design, wraparound metal bands on case pieces, and a unique wood patterned marble.



ACCENTS

One-of-a-kind metal and marble lead the way for accents. Cast aluminum comes in a Textured Graphite finish obtained through a multi-step process, while Black Forest marble is featured in a striated black, gray, and white wood grain pattern.

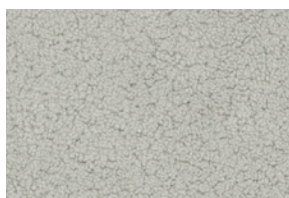


HARDWARE

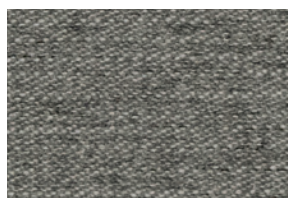
Cast aluminum hardware features the complex Textured Graphite finish found on the collection's metal accents. Faceted knobs, irregular ring pulls and bar pulls deliver a jewelry-like feel to the collection's case pieces.

FABRICS

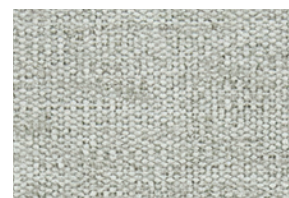
Part of Linea's appeal is how the neutral finishes and fabrics work together effortlessly. The beige and grey fabric tones complement the Cerused Greige and Cerused Charcoal wood finishes, as well as the Textured Graphite used on metal hardware and accents, and the black, gray, and white striations of Black Forest marble.



B427



B435



B442

ADDITIONAL IMAGES FEATURED

COVER: 384-H66G/FR6G Upholstered Channel Bed, 384-216 Nightstand, 384-052G Dresser, 384-508 Metal Bench.

INSIDE FRONT COVER: 384-510S/384-510 Pedestal Desk, 384-547G Upholstered Side Chair.

PAGES 2-3: 384-272B/384-273B Round Dining Table, 384-542B Arm Chairs, 384-130B Sideboard.

PAGES 8-9: 384-022B Rectangular Cocktail Table, 384-111B End Table, 384-125B Round Chairside Table, 384-910G Console Table, N2877 Palisades Sofa (*Body Fabric 2033-011 with contrasting cord 059-012*), 5002SL D'Angelo Swivel Chairs (*Leather 207-100*).

PAGES 16-17: 384-H66G/FR6G Upholstered Channel Bed, 384-232G Nightstand, 384-216 Nightstand, 384-052G Dresser, 384-333B Mirror, 384-508 Metal Bench, N3912L Antoni Chair (*Leather 235-010*).

PAGES 22-23: 384-123 Metal Round Chairside Table, 384-232G Nightstand, 384-042G Dresser, 384-321G Mirror, 384-022B Rectangular Cocktail Table, 384-132B Buffet, 384-542B Arm Chair, 384-242G/384-244G Rectangular Dining Table, 384-508 Metal Bench, 384-121B End Table.

INSIDE BACK COVER: 384-912B Sofa Table.

WOODS, FINISHES & MATERIALS

Oak veneers have been wire-brushed and cerused, adding subtle textures while leaving a white hang-up in the grain. Veneers are smoother than sandblasted woods, thus more refined, and finished in Cerused Greige and Cerused Charcoal. The striking striations of the Black Forest marble, along with the Textured Graphite found on metal, add additional layers of subtle sophistication.



Cerused Charcoal



Cerused Greige



Black Forest Marble



Textured Graphite Metal



Many high quality, natural materials, such as wood, veneer, glass, rubber, metal, plastic, cloth and/or stone, are used in our products and may reflect grain, vein or color variations. These variations are inherent in their species and enhance the unique beauty of each piece of furniture. Due to the photographic and printing processes used in the creation of this catalog, the finish and fabric colors displayed may vary from actual finish and fabric colors. Authorized Bernhardt retailers carry a variety of our furniture pieces and collections, so please contact them about the specific products at their location. Bernhardt uses materials and resources sourced globally to ensure a quality product. Specifications subject to change without notice. Copyright © 2018 Bernhardt Furniture Company. Printed in the USA 09/2018 GVS 5.0K.



